

BVS-3 SNAPLOC

INSTALLATION INSTRUCTIONS:

- Commercial and Golf
- "T" Splices
- Excellent Wire Restraint
- Completely Water Tight
- Silicone Filled
- Lock Mechanism Holds Splice In Place
- Wire Sizes 10 to 14 Solid



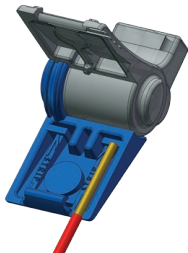
STEP #1



Open wings (handles) to 90 degree positions.

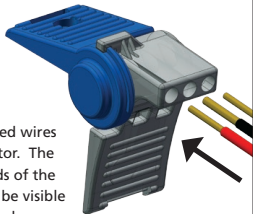
STEP #2

Strip wires to 5/8". Use the strip guide molded into the connector for reference.



STEP #3

Insert stripped wires into connector. The stripped ends of the wire should be visible through the clear housing on the back.



STEP #4

Hold wires in place while squeezing wings (handles) together until the latch snaps shut.



MADE IN CHINA

Use only in accordance with local and national codes.
U.S. Patent 7335050. All other appropriate trademarks, U.S. and
Foreign Patents apply. Printed in USA. ©2014 Blazing Products, Inc.

Blazing Products, Inc.
St. Louis, Missouri USA

www.BlazingProducts.com

BLAZING
INSTALL FASTER.