

DRYCONN®

WATERPROOF CONNECTORS

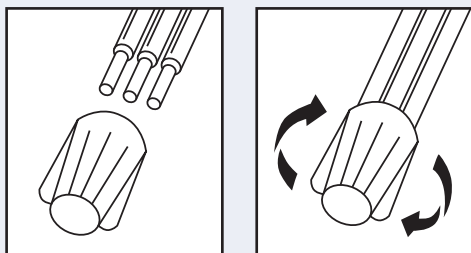
Filled Connectors for Outdoor/Irrigation Use



INSTALLATION INSTRUCTIONS

IMPORTANT: Turn off power before installing or removing connector. Product to be used in accordance with local and national codes.

1. Strip #22 - #16 wires 1/2" (12.7mm) and #14 - #8 wires 7/16" (11.11mm).
2. Align any frayed strands or conductors.
3. Pre-twisting unnecessary. Place stripped wires together with ends of insulation even.
4. Twist connector onto wires pushing firmly until hand-tight. Do not over torque.
5. Wipe sealant in and around conductors and connector opening while tightening. Do not reuse.



DryConn® Black®/Gray

Catalog #	Selling Unit
61235	Bag of 20
61241	Canister of 100
61242	Canister of 500
61245	Bag of 100

PRODUCT SPECIFICATIONS & MEASUREMENTS

Max. Voltage: 600V max. building wire
(1000V max. signs or luminaries)

Connector Size: 1 19/64" x 43/64"

Wire Type: Copper/Copper

Wire Range: Min #22/Max #8

Temperature Rating: 105°C (221°F)

Silicone Sealant Temperature: -45°F to 400°F

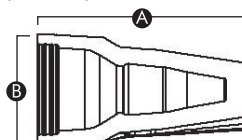
UL Designation: MWP

Measurements (Inches):

A - 1.30

B - 0.67

C - 0.51



UL 486D listed as a sealed wire connector system. For use in damp, wet, raintight, direct bury, and submersible locations. Not to be used in continuous submersion applications.

Selected 600V Wire Combinations
For use with solid and/or stranded combinations.

1 - 3 #10	1 - 4 #12	2 #14 w/2 - 4 #16
1 #12 w/1 - 4 #14	2 - 5 #14	1 #10 w/1 - 3 #14
1 #12 w/2 - 4 #18	2 - 6 #16	1 #14 w/3 - 4 #18
4 #14 w/1-2 #18	1 #12 w/1 - 4 #16	2 #12 w/1-2 #14

Contact factory for a complete list of wire combinations at 800.633.0232.

*The color black is a trademark of King Innovation.



50100-23 REV L 08/17



MADE IN U.S.A.

www.kinginnovation.com

(P) 800.633.0232

(F) 636.519.5410